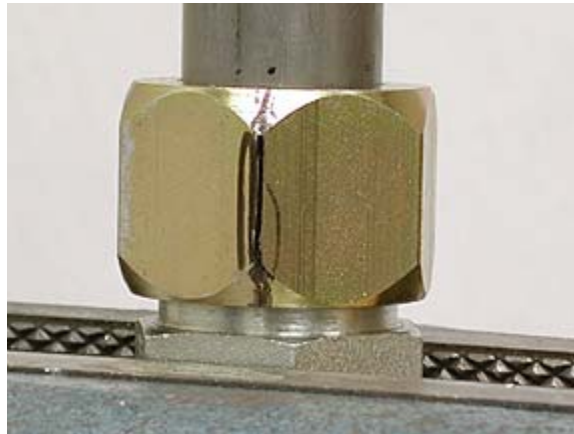


Tips for Successful Assembly During Final Installation.

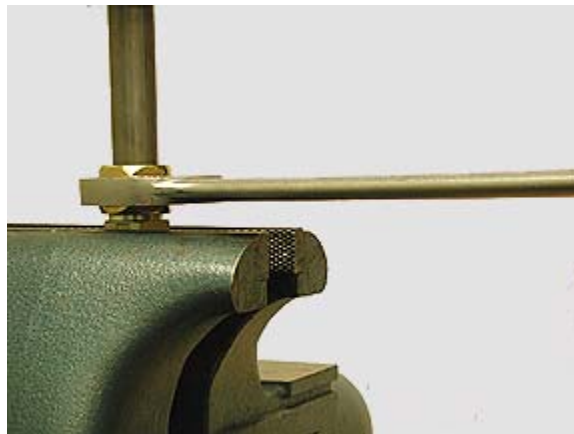
1.0 Assembly should be fixed into a secure position within the vice preventing movement.



2.0 A reference mark should always be used to monitor the number of turns.



3.0 The wrench should remain horizontal and perpendicular to the axial plain of the tube and travel in a linear path through the tightening process. This will allow for the application of even force.



4.0 The wrench traveling in linear plane throughout the application of force. Axial force applied to the tube to keep it fully bottomed in the fitting.



Assembly Conditions to Avoid

5.0 If possible this position in the vise should be avoided as the weight of the tubing and application of force could cause the fitting to move in the vise. This position could allow the tubing to move from its fully bottomed position and effect the ability of the ferule to bite and seal properly.



6.0 Excessive movement of the wrench should be avoided as it will cause an uneven application of force or cause the assemble to move from its fixed position during the tightening process. Excessive or sudden force will cause a moment of inertia error that will effect the ability of the ferule to bite and seal properly.

