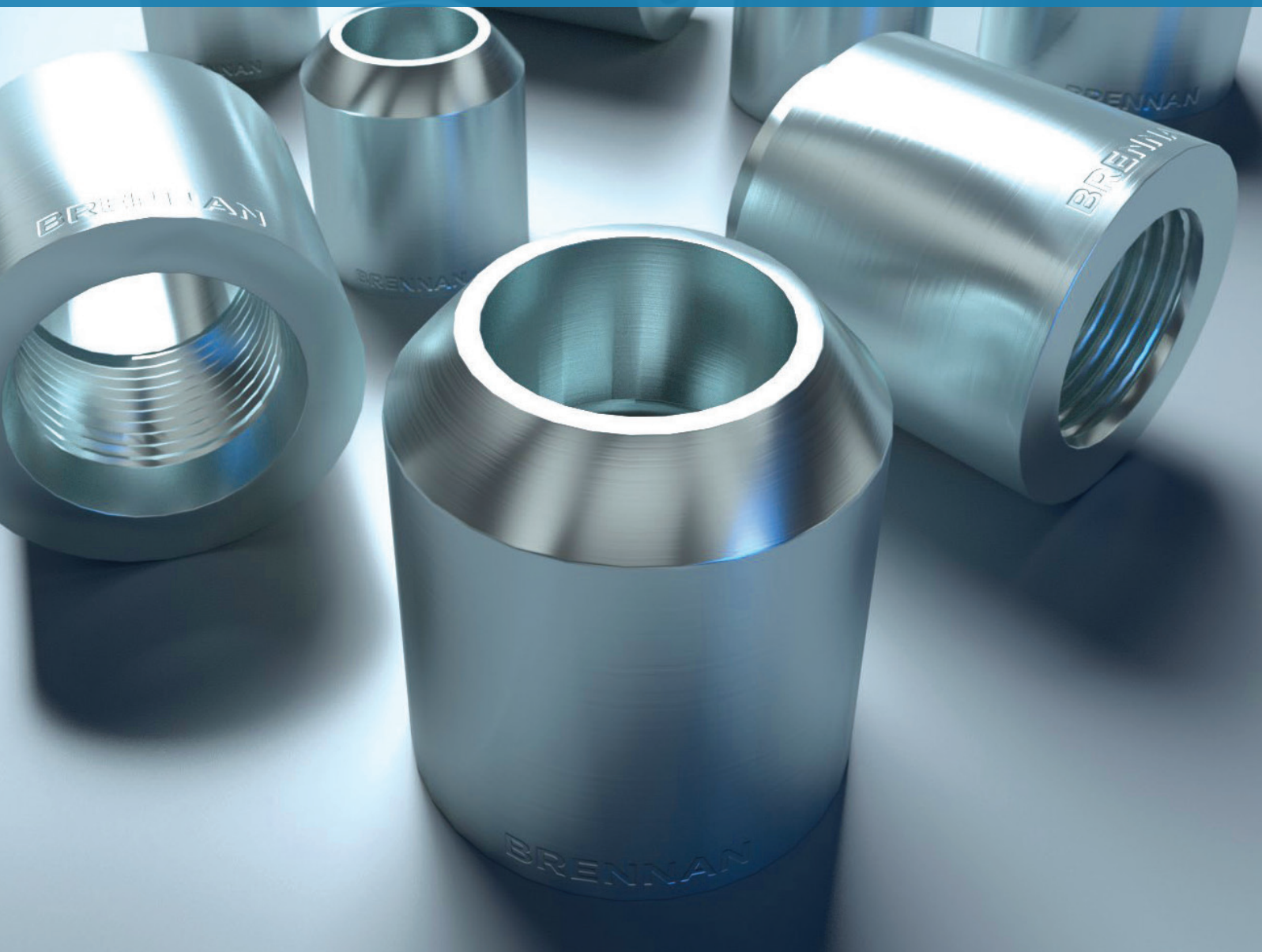




NPT & ORB WELD FITTINGS



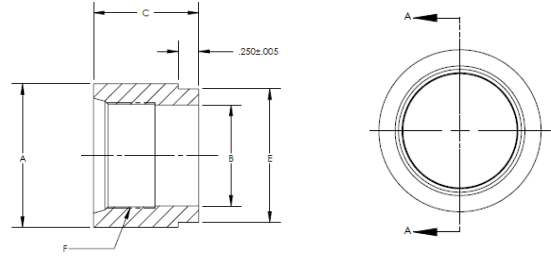
Our line of weld fittings is available in NPT and ORB sizes from 1/4 inch to 3 inches in half-couplings as well as full couplings. Constructed of high quality carbon steel, Brennan weld fittings are available with your choice of two weld surface profiles, beveled and notched.

Visit us at brennaninc.com or give us a call at 800.331.1523

© 2018 Brennan Industries, Inc. LIT-09

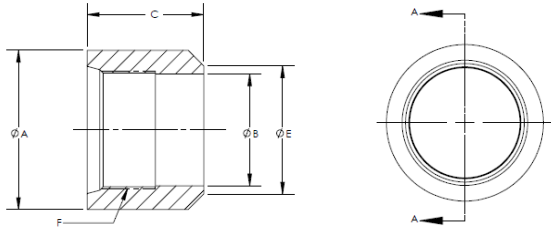
ORB HALF COUPLING, STEP STYLE

PART #	A ±.010	B ±.005	C ±.010	E ±.005	F
0475-04	0.875	0.389	1	0.75	7/16-20 U.N.F.-2B
0475-06	1	0.508	1	0.875	9/16-18 U.N.F.-2B
0475-08	1.25	0.689	1.06	1.125	3/4-16 U.N.F.-2B
0475-10	1.375	0.806	1.06	1.25	7/8-14 U.N.F.-2B
0475-12	1.5	0.981	1.28	1.375	1-1/16-12 U.N.-2B
0475-14	1.625	1.106	1.28	1.5	1-3/16-12 U.N.-2B
0475-16	1.75	1.231	1.28	1.625	1-5/16-12 U.N.-2B
0475-20	2.25	1.544	1.28	2.125	1-5/8-12 U.N.-2B
0475-24	2.27	1.794	1.28	2.5	1-7/8-12 U.N.-2B
0475-32	3.25	2.419	1.5	3	2-1/2-12 U.N.-2B



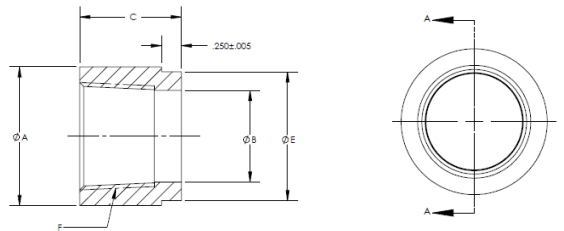
ORB HALF COUPLING, BUTT WELD STYLE

PART #	A ±.010	B ±.005	C ±.010	E ±.005	F
0475B-04	0.875	0.389	1	0.57	7/16-20 U.N.F.-2B
0475B-06	1	0.508	1	0.69	9/16-18 U.N.F.-2B
0475B-08	1.25	0.689	1.06	0.87	3/4-16 U.N.F.-2B
0475B-10	1.375	0.806	1.06	0.99	7/8-14 U.N.F.-2B
0475B-12	1.5	0.981	1.28	1.16	1-1/16-12 U.N.-2B
0475B-14	1.625	1.106	1.28	1.29	1-3/16-12 U.N.-2B
0475B-16	1.75	1.231	1.28	1.41	1-5/16-12 U.N.-2B
0475B-20	2.25	1.544	1.28	1.72	1-5/8-12 U.N.-2B
0475B-24	2.27	1.794	1.28	1.98	1-7/8-12 U.N.-2B
0475B-32	3.25	2.419	1.5	2.6	2-1/2-12



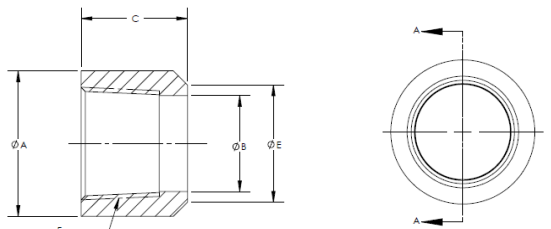
NPTF HALF COUPLING, STEP STYLE

PART #	A ±.010	B	C ±.010	E ±.005	N.P.T.F.
0485-04	0.875	0.437	1.06	0.75	1/4-18
0485-06	1	0.578	1	0.875	3/8-18
0485-08	1.25	0.718	1.06	1.125	1/2-14
0485-12	1.5	0.921	1.28	1.375	3/4-14
0485-16	1.75	1.156	1.28	1.625	1-11-1/2
0485-20	2.25	1.5	1.28	2.125	1-1/4-11-1/2
0485-24	2.75	1.734	1.28	2.5	1-1/2-11-1/2
0485-32	3.25	2.218	1.5	3	2-11-1/2



NPTF HALF COUPLING, BUTT WELD STYLE

PART #	A ±.010	B	C ±.010	E ±.005	F N.P.T.F.
0485B-04	0.875	0.437	1.06	0.57	1/4-18
0485B-06	1	0.578	1	0.69	3/8-18
0485B-08	1.25	0.718	1.06	0.87	1/2-14
0485B-12	1.5	0.921	1.28	1.16	3/4-14
0485B-16	1.75	1.156	1.28	1.41	1-11-1/2
0485B-20	2.25	1.5	1.28	1.72	1-1/4-11-1/2
0485B-24	2.75	1.734	1.28	1.98	1-1/2-11-1/2
0485B-32	3.25	2.218	1.5	2.6	2-11-1/2



Note: Parts must be oil dipped