



RHINO BLUE VINYL WRAP™

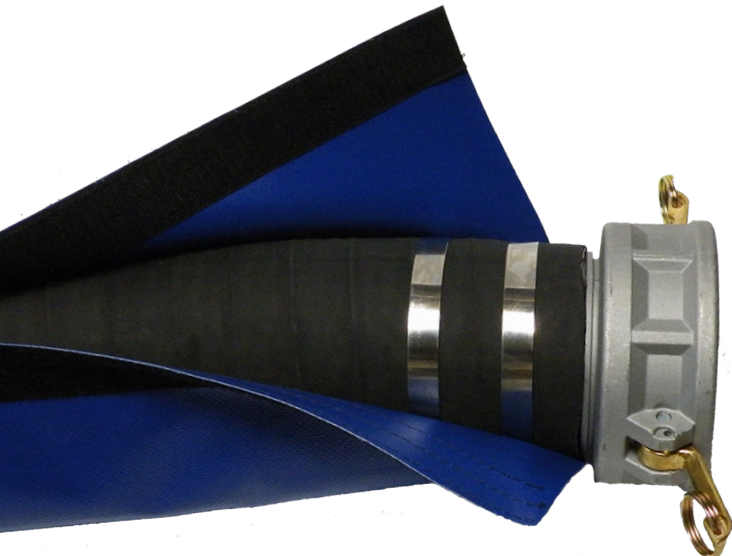
FEATURES

- 35 oz. Vinyl Coated Polyester
- Coating: Poly Vinyl Chloride
- Construction: Woven
- Coating Distribution: 60% Front / 40% Back
- Sealing Properties: Dielectric, Thermal
- Mildew and UV Resistant
- Meets RoHS

BENEFITS

- Lightweight, tough, highly flexible
- Fast OEM & field service
- Easy to retrofit
- Fast and easy installation
- Proprietary bonding process allows cutting without fraying
- Easy to cut to length

Also available in Green, Yellow or Black



MECHANICAL PROPERTIES

- **Grab Tensile:** Meets ASTM D5034 Results: 696-741 Lbs.
- **Strip Tensile:** Meets ASTM D5035 Results: 356-530 Lbs.
- **Tongue Tear:** Meets ASTM D2261 Results: 84-111 Lbs.
- **Adhesion:** Meets ASTM D751 Results: 33 Lbs.
- **Temperature:** Meets ASTM D751
- **Temperature Range:** + 180°F Continuous to -41°F
- This product can expose you to chemicals including di(2-ethylhexyl)phthalate (DEHP), which are known to the State of California to cause cancer and birth defects or other reproductive harm. For more information go to www.P65Warnings.ca.gov

RHINO BLUE VINYL WRAP REV.06.2021



IT'S NOT TOUGH, UNLESS IT'S **RHINO TOUGH**

www.rhinosleeve.com

RhinoSales@Brennaninc.com

1-877-744-6602 (1-877-RHINO 02)



SIZING CHART

BRENNAN Part #	Wrap I.D. (inches)	Wrap I.D. (mm)	Flat Width (inches)	Flat Width (mm)
RW-2.00-BLV	2.00"	50.80	7.75"	196
RW-3.00-BLV	3.00"	76.20	11.00"	279
RW-4.00-BLV	4.00"	101.60	14.00"	355
RW-5.00-BLV	5.00"	127.00	17.25"	438
RW-6.00-BLV	6.00"	152.40	20.38"	517
RW-7.00-BLV	7.00"	177.80	23.58"	598
RW-8.00-BLV	8.00"	203.20	26.62"	676

* Additional sizes are available, contact us for information

Meets RoHS

This product can expose you to chemicals including di(2-ethylhexyl)phthalate (DEHP), which are known to the State of California to cause cancer and birth defects or other reproductive harm. For more information go to www.P65Warnings.ca.gov

CHEMICAL RESISTANCE CHART

Chemical	PVC	Chemical	PVC	Chemical	PVC
Acetaldehyde	G	Diethyl Benzene	N	Methoxyethyl Oleate	N
Acetamide	N	Diethyl Ether	F	Methyl Ethyl Ketone	N
Acetic Acid, 5%	E	Diethyl Ketone	N	Methyl Isobutyl Ketone	N
Acetic Acid, 50%	E	Diethyl Malonate	G	Methyl Propyl Ketone	N
Acetone	E	Dimethyl Formamide	F	Methylene Chloride	N
Aluminum Hydroxide	E	Ether	F	Nitric Acid, 50%	G
Ammonia	E	Ethyl Acetate	F	Nitric Acid, 70%	F
Ammonium Hydroxide	E	Ethyl Benzene	N	Nitrobenzene	N
Ammonium Oxalate	E	Ethyl Benzoate	N	n-Octane	F
n-Amyl Acetate	F	Ethyl Butyrate	N	Orange Oil	F
Amyl Chloride	N	Ethyl Chloride, Liquid	N	Perchloric Acid	G
Aniline	N	Ethyl Cyanoacetate	N	Perchloroethylene	N
Benzaldehyde	N	Ethyl Lactate	F	Phenol, Crystals	F
Benzene	N	Ethylene Chloride	N	Phosphoric Acid, 1-5%	E
Benzoic Acid, Sat.	E	Ethylene Glycol	E	Phosphoric Acid, 85%	E
Benzyl Acetate	F	Ethylene Oxide	F	Potassium Hydroxide	E
Boric Acid	E	Fluorine	N	Propane Gas	E
Bromine	G	Formic Acid, 50%	G	Propylene Glycol	F
Bromobenzene	F	Formic Acid, 90-100%	F	Propylene Oxide	F
n-Butyl Acetate	N	Fuel Oil	E	Resorcinol	F
sec-Butyl Alcohol	G	Gasoline	G	Salicylaldehyde	F
Butyric Acid	G	Glycerine	E	Sulfuric Acid, 1-6%	E
Calcium Hypochlorite	G	n-Heptane	F	Sulfuric Acid, 20%	E
Carbazole	N	Hexane	G	Sulfuric Acid, 60%	E
Carbon Disulfide	N	Hydrochloric Acid, 1-5%	E	Sulfuric Acid, 98%	N
Carbon Tetrachloride	G	Hydrochloric Acid, 35%	G	Sulfur Dioxide, Liq.	F
Chlorine	E	Hydrofluoric Acid, 4%	G	Sulfur Salts	N
Chloroacetic Acid	F	Hydrofluoric Acid, 48%	G	Tartaric Acid	E
Chloroform	N	Hydrogen	E	Tetrahydrofuran	N
Chromic Acid	E	Hydrogen Peroxide	E	Thionyl Chloride	N
Citric Acid	G	Isopropyl Acetate	N	Toluene	F
Cresol	N	Isopropyl Benzene	N	Trichloroethane	N
Cyclohexane	G	Kerosene	E	Trichloroethylene	N
Decalin	E	Lactic Acid, 3%	G	Turpentine	G
o-Dichlorobenzene	G	Lactic Acid, 85%	G	Vinylidene Chloride	N
p-Dichlorobenzene	N	Magnesium Salts	E	Xylene	N
				Zinc Salts/Stearate	E

Resistance

E = Excellent G = Good F = Fair N = Not Recommended

The information above is based on experience to date and is believed to be reliable. It is intended as a guide for use at your own discretion and risk. All indications refer to room temperature

RHINO BLUE VINYL WRAP REV.06.2021



IT'S NOT TOUGH, UNLESS IT'S RHINO TOUGH

www.rhinosleeve.com

RhinoSales@Brennaninc.com

1-877-744-6602 (1-877-RHINO 02)